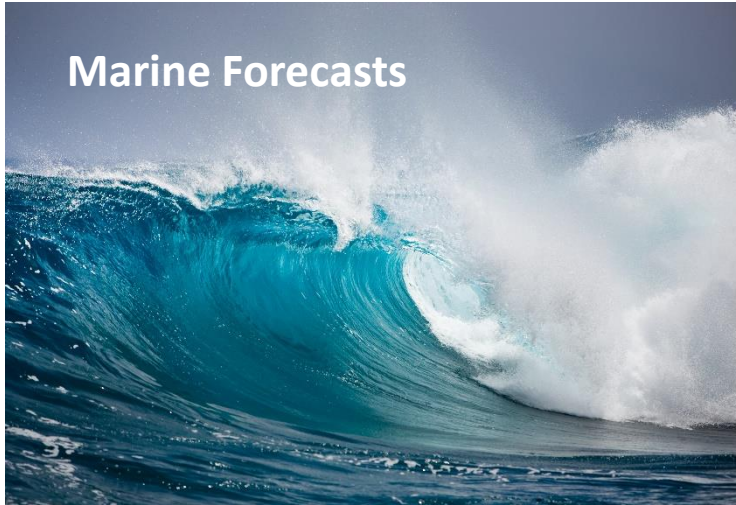


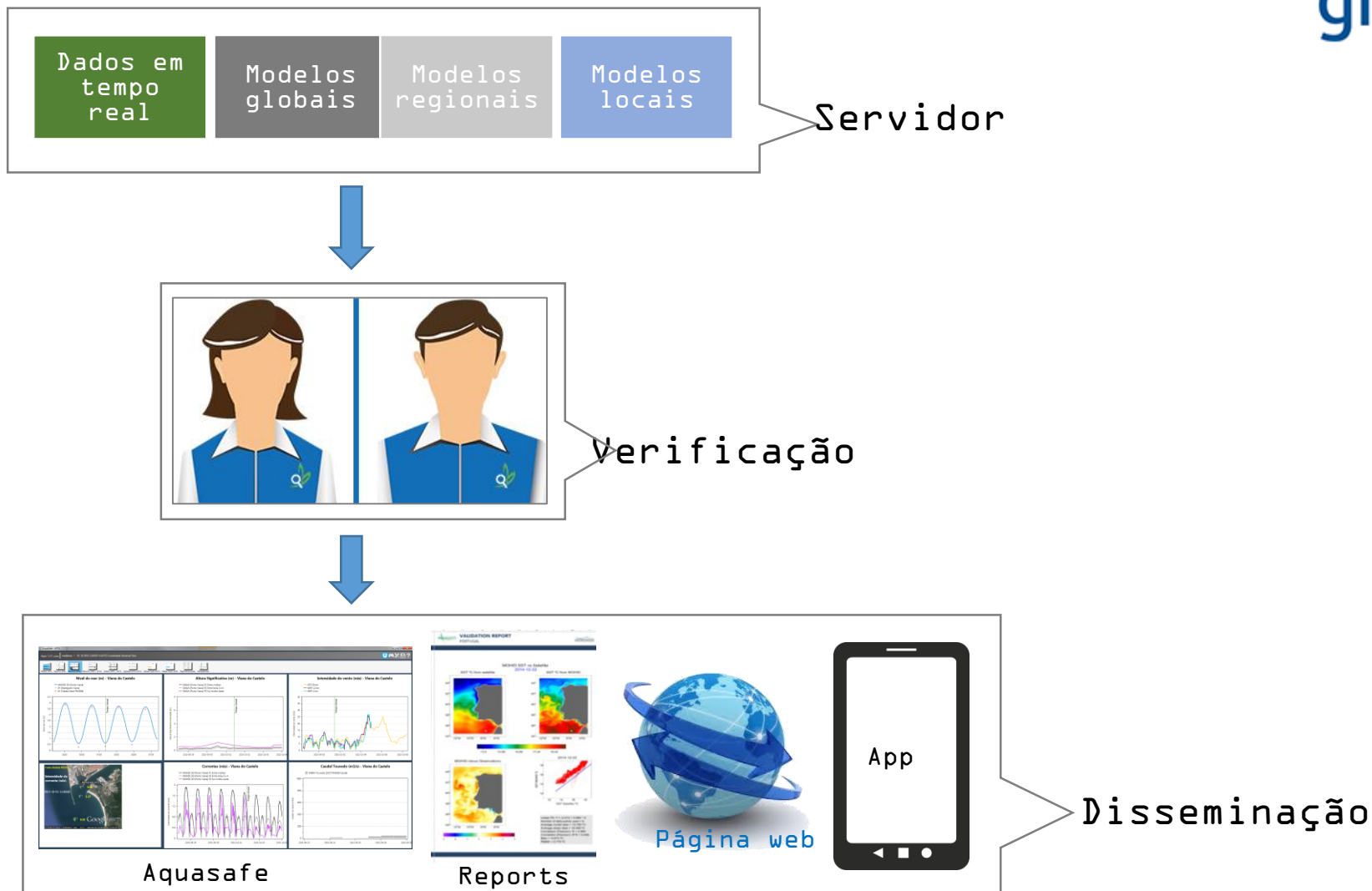


# AMOS: Advanced Meteo-Oceanographic Services for Sea

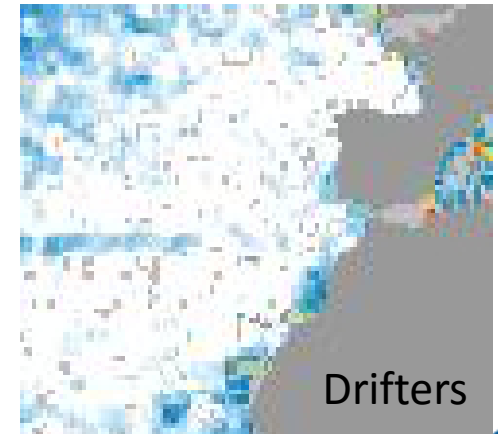
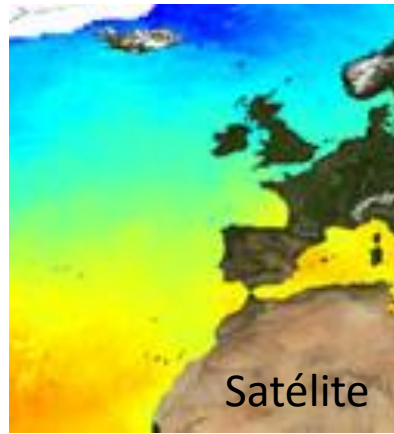
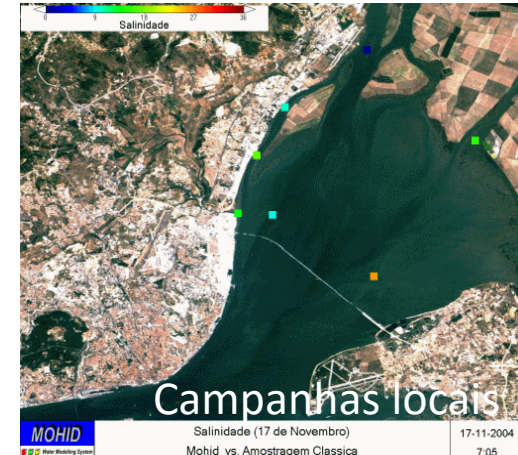
# AMOS: um serviço integrado



# Esquema geral do serviço



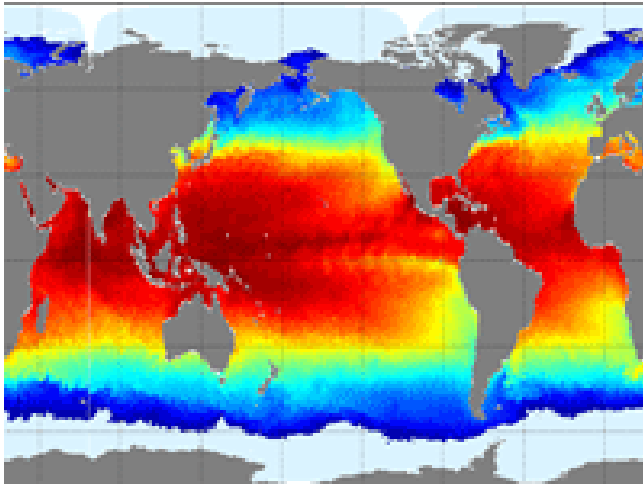
# Dados em tempo real



# Modelos globais

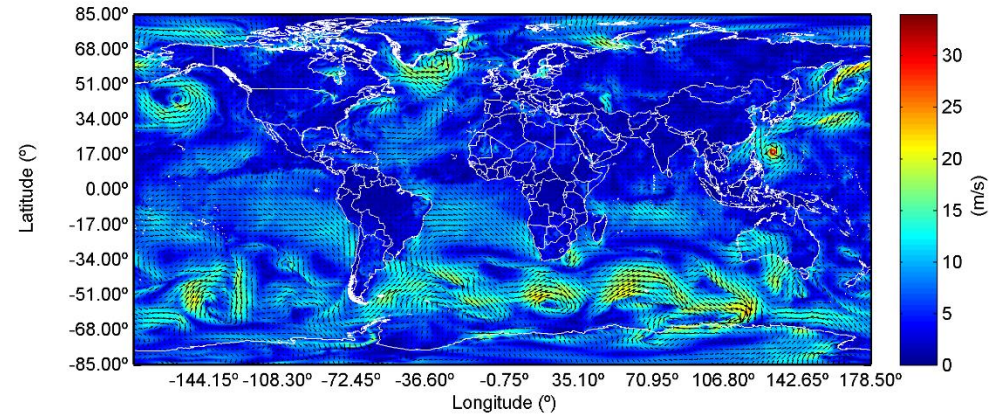


## Oceanografia

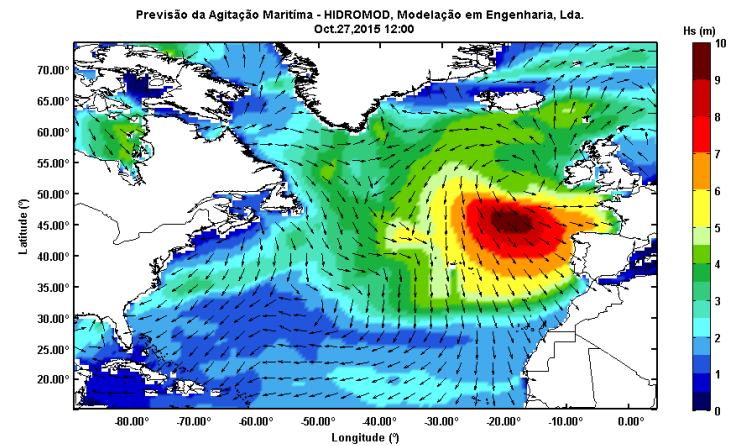


## Meteorologia

GFS - Wind Forcing



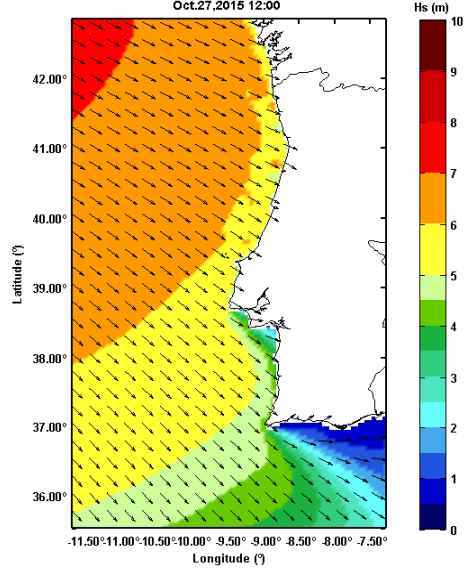
## Ondas



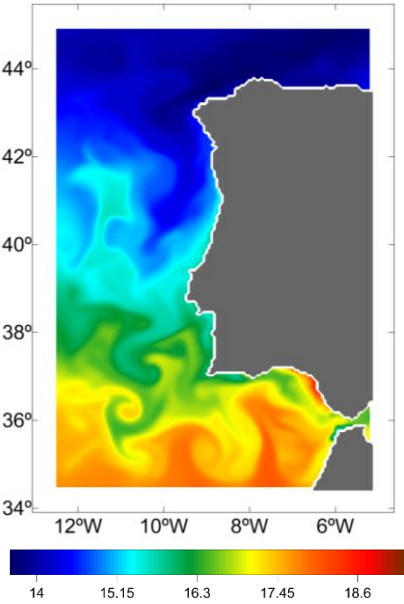
# Modelos regionais

## Continente

Previsão da Agitação Marítima - HIDROMOD, Modelação em Engenharia, Lda.  
Oct.27.2015 12:00

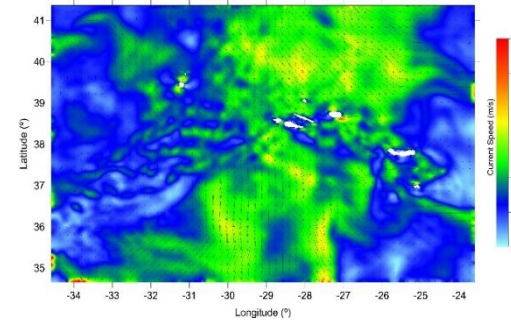


SST °C from MOHID

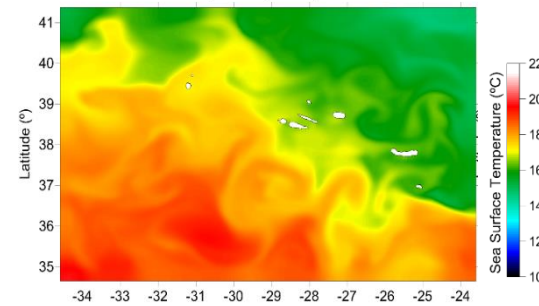


## Açores

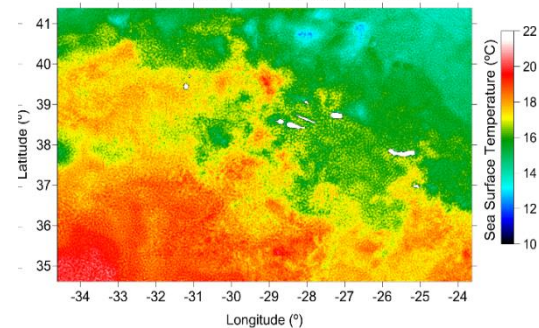
Surface Current Maps : Azores Island



Sea Surface Temperature (MOHID) : Azores Island

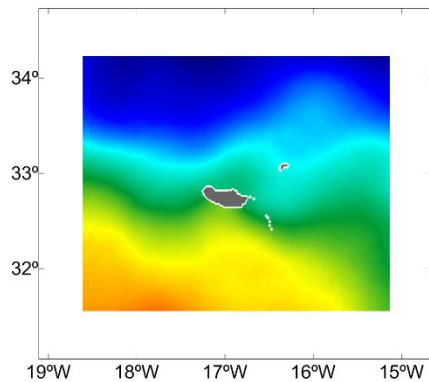


Sea Surface Temperature (L4 Sensor) : Azores Island

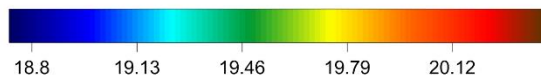
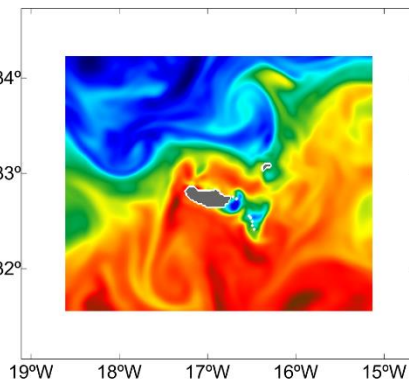


## Madeira

SST °C from satellite



SST °C from IBI



# Modelos locais

