

Iceland 
Liechtenstein
Norway grants

Closing Event of the PT02 Programme

Integrated Marine and Coastal Waters Management “Achieved Outcomes”

December 6th - Lisbon



**SYSTEM FOR INTEGRATED MONITORING
OF THE OCEAN**

**Open Data and Services Platform for
Portuguese Institutions**

Nuno Almeida

DEIMOS Engenharia

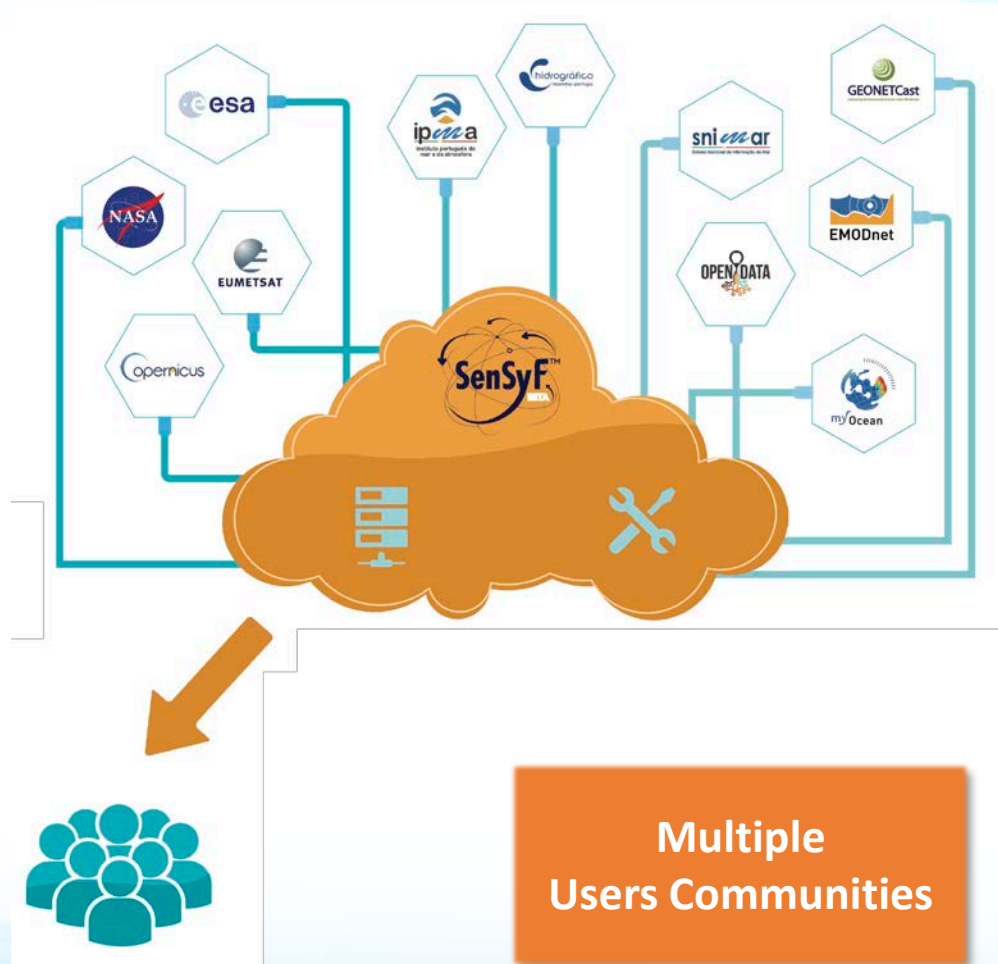
- **SIMOcean** aims to contribute for the improvement of the National marine management, monitoring and vigilance capabilities
- Aggregates data from wide variety of sources:
 - Earth Observation
 - Meteorological Data
 - Maritime Environmental Monitoring Data
 - Other Applicable Open Data Sources
- Data is available on a Cloud Environment
 - For the development and exploitation of new Value Added Services

Schedule

Start: 09/2015

Finish: 04/2017





DATA CATALOGUE

Meteorological Data

- Wind Characterisation
- Air Temperature
- Atmospheric Pressure
- Precipitation
- Cloudiness

Oceanographic Data

- Sea Surface Temperature
- Ocean Currents
- Ocean Colour
- Chlorophyll

Added Value Products

- Sea State Index for Harbours
- Characterization of Potential Fishing Areas



FISHING AREAS CHARACTERIZATION

Prediction of fish distributions and potential areas of catch for the main species along the Portuguese coast



SEA STATE INDEX FOR HARBOUR APPROACHES

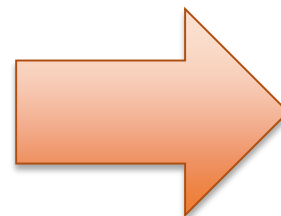
To provide access to real-time sea state information based on high-resolution forecast models for the port authorities.



COMPARISON OF METEO-OCEANOGRAPHIC PARAMETERS

Integrated web visualization environment of different meteo-oceanographic fields

- Quick and User Friendly Search Interface
 - Web and REST
- Scalable
- Interoperable capabilities with European Open Data portals
- Easy to deploy and expand capabilities
- Open Source
- Support several metadata profiles
 - INSPIRE, DCAT



<http://catalogue.simocean.pt>

The screenshot shows the SIMOocean Catalogue website. At the top left is the SIMOocean logo. Navigation links for Datasets, Organizations, Groups, and Stats are at the top right. A 'Filter by location' section includes a map with markers for 1867 and 1701. A central section features icons for Model, In-Situ, and Satellite data types. A search bar is labeled 'Search data' with a date range of 10-12-2016 - 10-01-2017 and a search input field containing 'E.g. environment'. A 'Statistics' section displays 18.6k datasets, 3 organizations, and 28 groups. The footer contains logos for the Portuguese Government, EEA grants, DGPM, DEIMOS, IPMA, Hidrográfico, and SenSyF.

Home / Organizations / CMEMS / Observed Sea Surface ...

Observed Sea Surface Temperature

Dataset Groups Activity Stream Manage

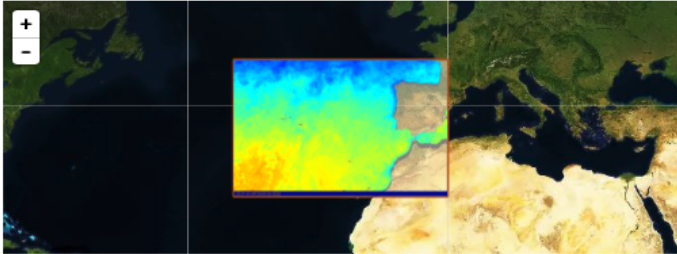
Organization

Copernicus
Europe's eyes on Earth

CMEMS

The CMEMS provides regular and systematic core reference information on the state of the physical oceans and regional seas. The observations and forecasts produced by the... [read more](#)

Dataset extent



Map data © OpenStreetMap contributors
Tiles by MapBox

Observed Sea Surface Temperature

O produto observação tri-horária da temperatura da superfície do mar é gerado para a região da Europa pelo satélite multi-sensor L4 (dia e noite), é uma análise com uma resolução horizontal de 2km e que contém o sinal de aquecimento diurno.

Data and Resources

[Product Download](#) [Explore](#)

[GIF Preview ...](#) [Explore](#)

[XML Metadata Download ...](#) [Explore](#)

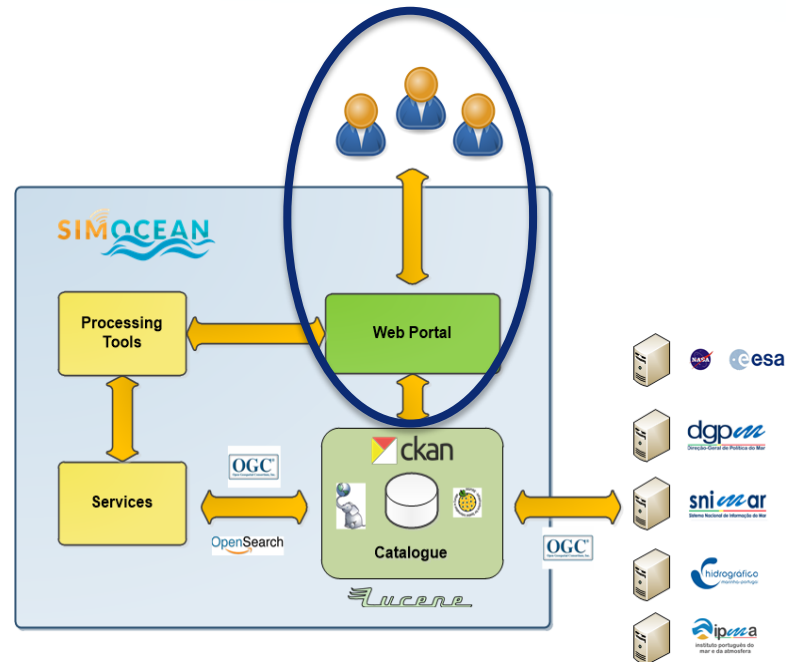
CMEMS Características oce... Observação da Terra Oceanografia Temperatura da supe...

Additional Info

Field	Value
State	active
Last Updated	October 30, 2017, 7:00 AM (UTC+00:00)
Created	October 30, 2017, 7:00 AM (UTC+00:00)
Contact	OSI-METNO-OSLO-NO (SD)
Contact Email	marine-servicesdesk@met.no
CreationTime	2017-10-30T00:00:00.000000Z
Limitations On Public Access	See Copernicus Marine Environment Monitoring Service Data commitments and licence at: http://marine.copernicus.eu/web/27-service-commitments-and-licence.php
Lineage	Esta análise SST é gerada pelo Meteo France CMS para a região da Europa. Este produto é um produto tri-horário construído com L3S tri-horários provenientes de produtos (agrupados) mono-sensor L3 gerados a partir de amostras ploorizadas, com resolução de 0,02 graus e

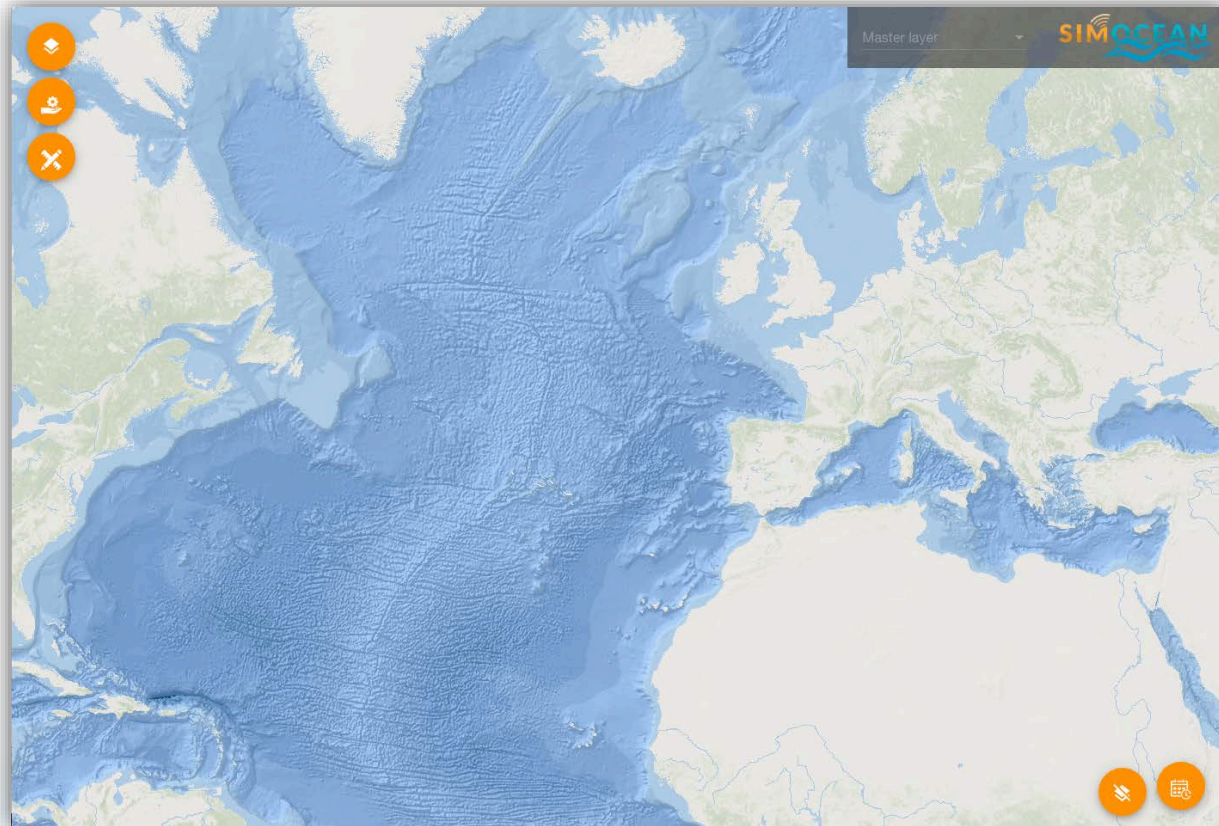
- Main entry point for the end users to view all datasets available

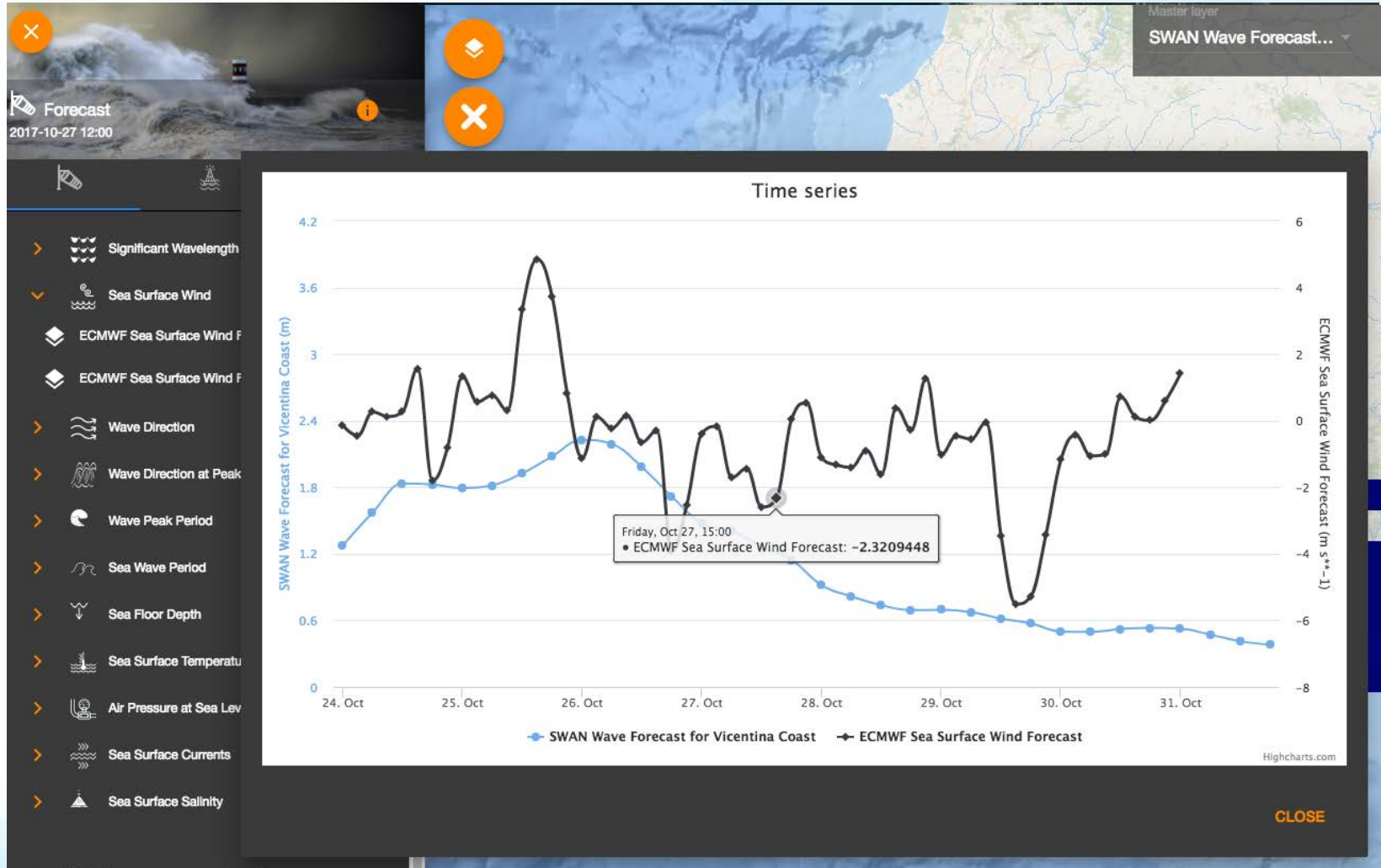
- Maps
- Plots
- Animations

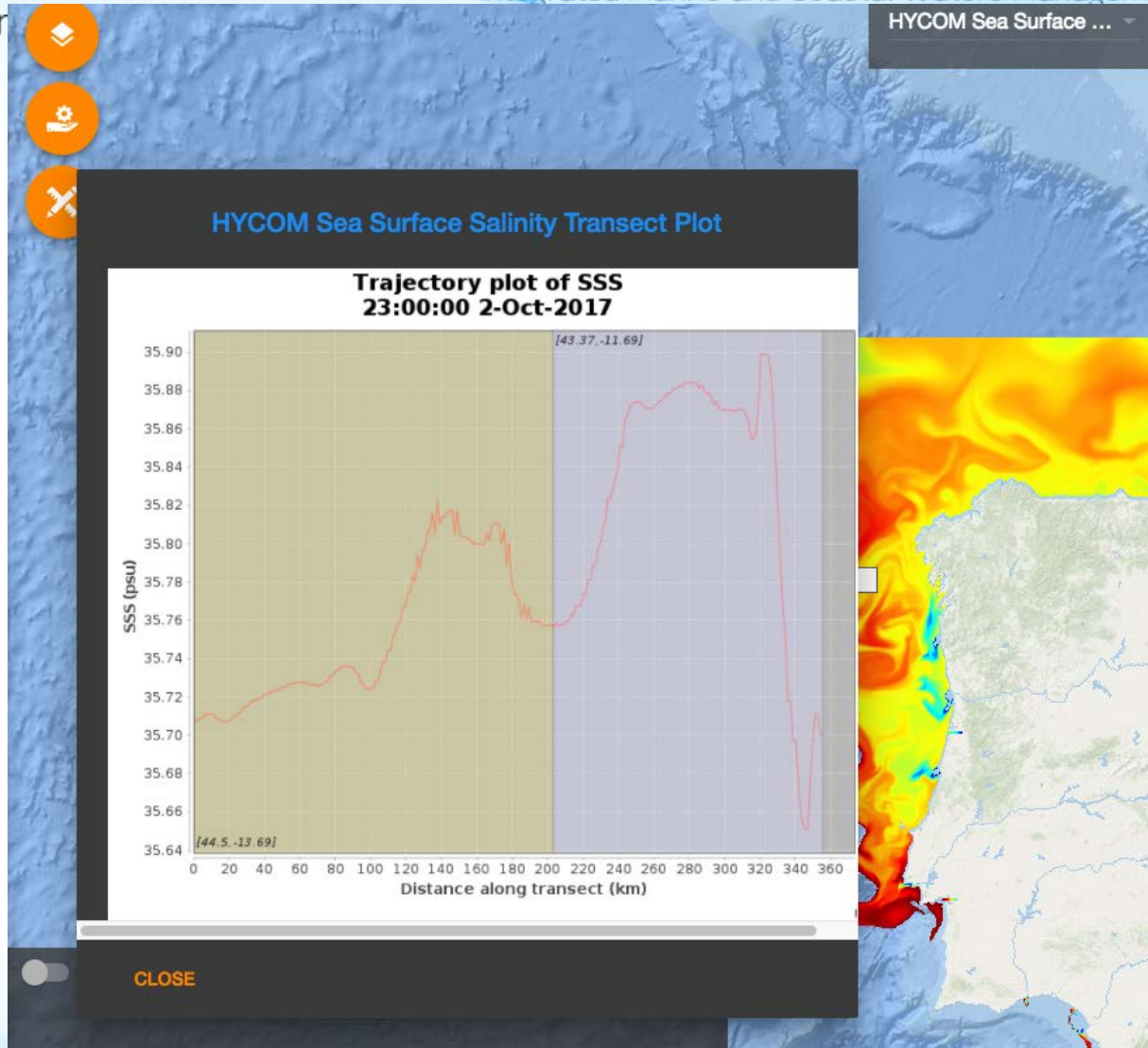


- To provide unique visualization capabilities according to the use cases and end users needs.
- Facilitate the analysis on the data/services available

<http://geoportal.simocean.pt>







- Flexible platform able to communicate with different data provision systems from IH, IPMA, CMEMS
- Store datasets and metadata according to user needs
- Powerful search engine supporting queries through Web Portal or M2M
- Scalable platform supporting the integration of new services
- Catalogue is compliant with other initiatives:
 - SNIMAR, NIPIMAR, EMODNET, MyOcean
 - Through INSPIRE directive
 - OGC Standards

ACKNOWLEDGEMENTS

- EEAGrants Programme
- DGPM
- Project Team



Thank You

<http://www.simocean.pt>

<http://catalogue.simocean.pt>

[Http://geoportal.simocean.pt](http://geoportal.simocean.pt)