



BLUECOM+

Cost-effective Broadband Communications at Remote Ocean Areas

Rui Campos et al.

INESC TEC

Centre for Telecommunications and Multimedia



Motivation



Monitoring
marine ecosystems and their biodiversity

Blue Economy
traditional and emerging activities



Motivation



Dissemination of marine data

collected by ocean intelligent platforms in remote ocean areas

Applications and services

access to Internet-based applications/services in remote ocean areas

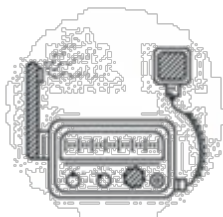
Problem



HF – narrowband



Satellite – high costs
and narrowband



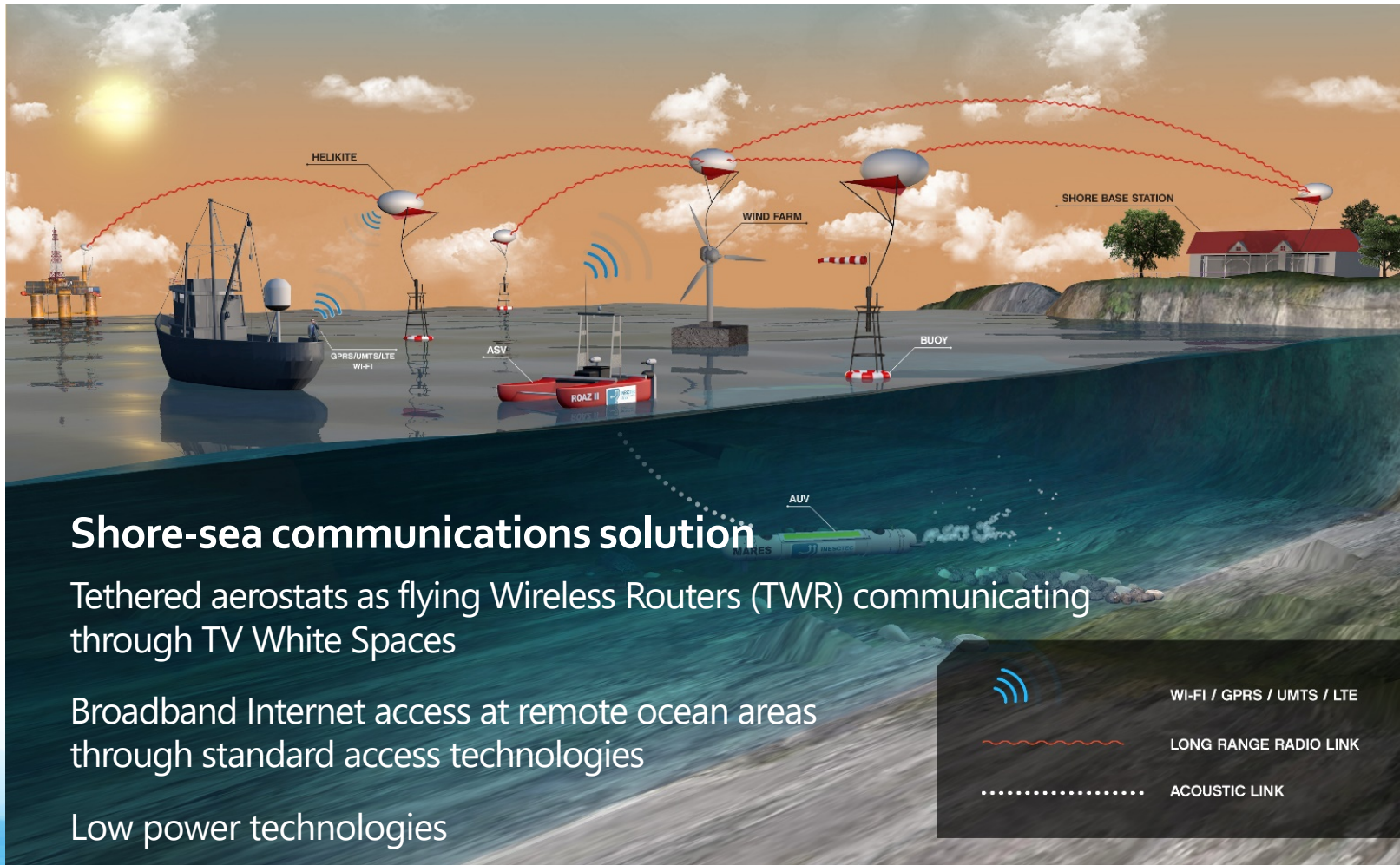
VHF Radio – narrowband
and half-duplex



Mobile GPRS/3G/4G –
broadband, only near shore

There is **no communications solution enabling broadband, cost-effective Internet access at remote ocean areas** in alternative to satellite

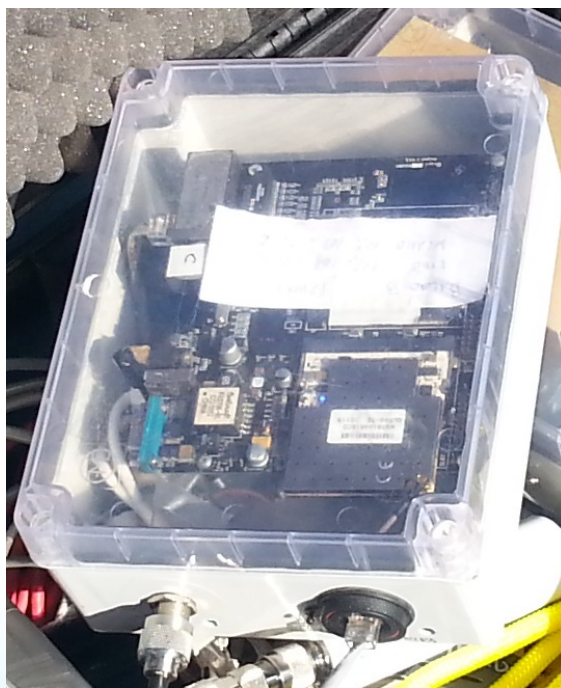
Concept



Implementation

Communications box

Single Board PC, wireless interface cards, designed antennas, and software



Implementation

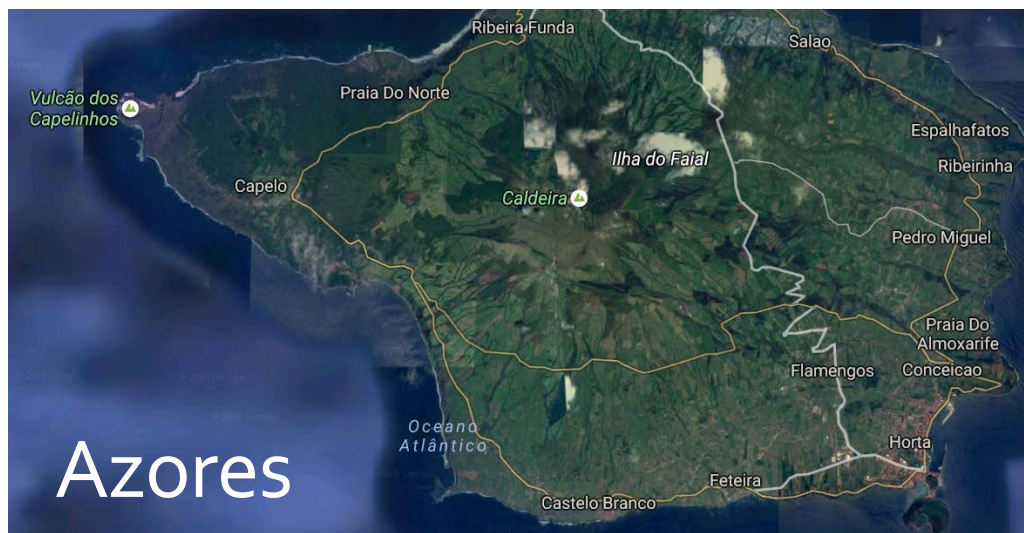
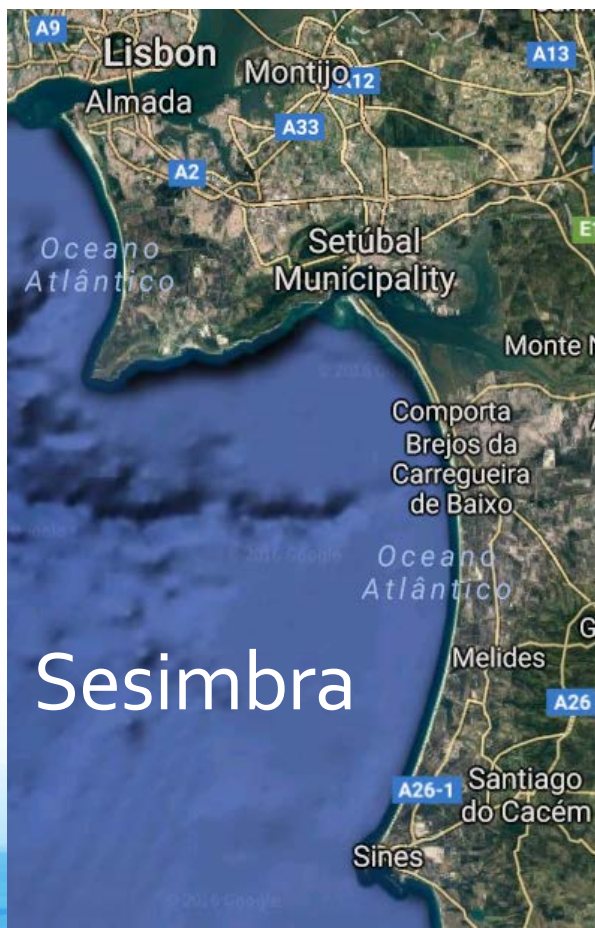
Familiarization with aerostat operation

Launch at INESC TEC building



Sea trials

July and September 2016, April 2017



Sea trials

Sesimbra campaigns



Land station

165 m above sea level

Sea trials

Sesimbra campaigns



Sea trials

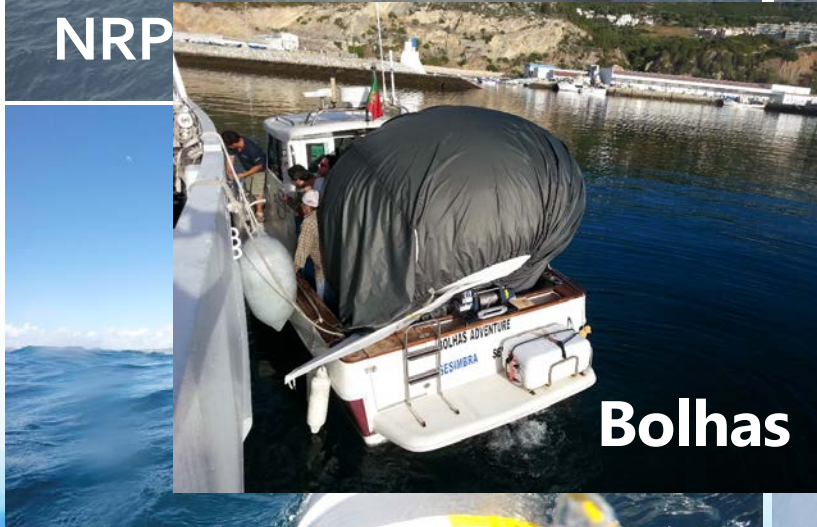
Sesimbra campaigns



NRP



0.7 Mbit/s up to 52 km



Bolhas



Iceland
Liechtenstein
Norway grants

Closing Event of the PT02 Programme
Integrated Marine and Coastal Waters Management "Achieved Outcomes"
December 6th - Lisbon

Sea trials

Sesimbra campaigns

Video conference at 40+ km from shore



Iceland
Liechtenstein
Norway grants

Closing Event of the PT02 Programme
Integrated Marine and Coastal Waters Management "Achieved Outcomes"
December 6th - Lisbon

Sea trials

Sesimbra campaigns

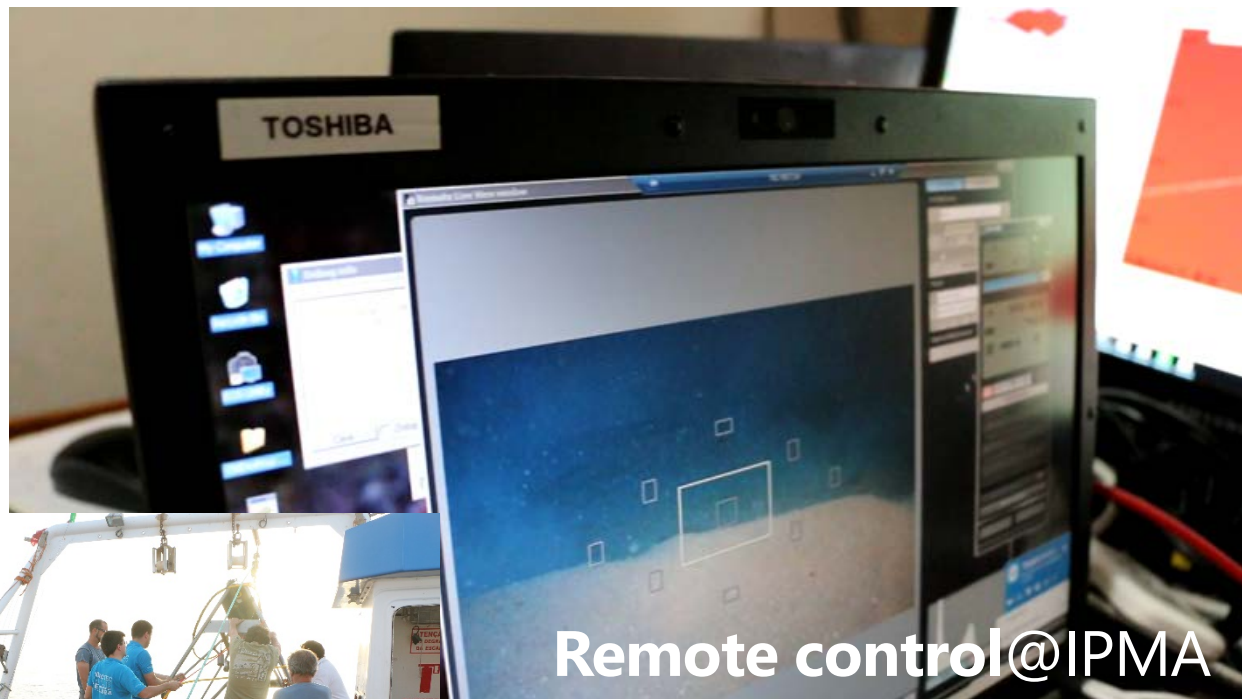


Sea trials

Sesimbra campaigns



Seaspider



Remote control@IPMA



Diving ...

Conclusion

Convergence to Maritime Internet of People and Things
demands wireless communications for humans and systems

Problem ...

affordable broadband Internet access lacking offshore

BLUECOM+

cost-effective solution extending broadband from land **beyond 50 km**
from shore with bitrates up to **1.5 Mbit/s**



Iceland
Liechtenstein
Norway grants

Closing Event of the PT02 Programme
Integrated Marine and Coastal Waters Management "Achieved Outcomes"
December 6th - Lisbon

Thank you!

<http://bluecomplus.inesctec.pt>

